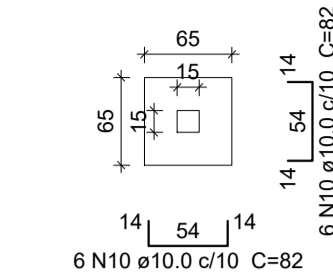
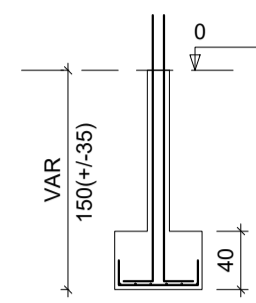


S8=S39=S42  
PLANTA  
ESC 1:50

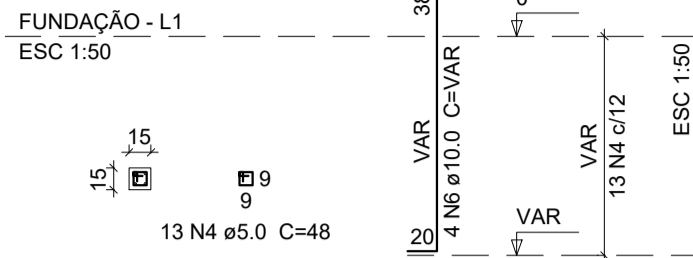


Solo com capacidade de suporte > 1.60 kgf/cm<sup>2</sup>  
Solo compactado sobre a sapata  
peso específico > 2000.00 kgf/m<sup>3</sup>

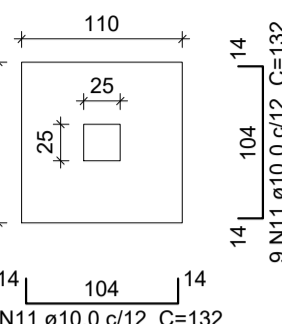
CORTE  
ESC 1:50



P8=P39=P42

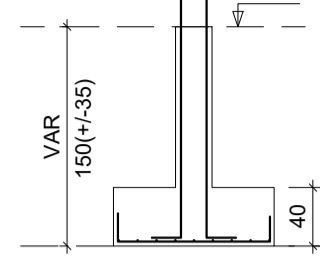


S43=S44  
PLANTA  
ESC 1:50

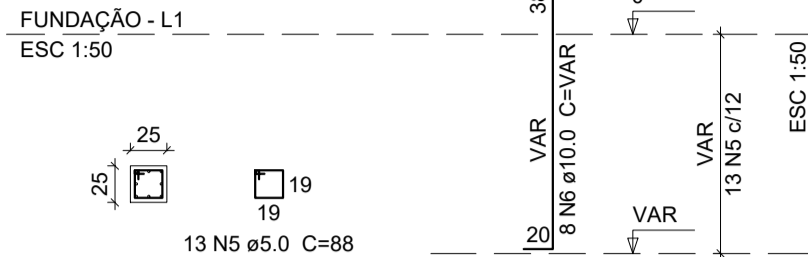


Solo com capacidade de suporte > 1.60 kgf/cm<sup>2</sup>  
Solo compactado sobre a sapata  
peso específico > 2000.00 kgf/m<sup>3</sup>

CORTE  
ESC 1:50



P43=P44



Relação do aço

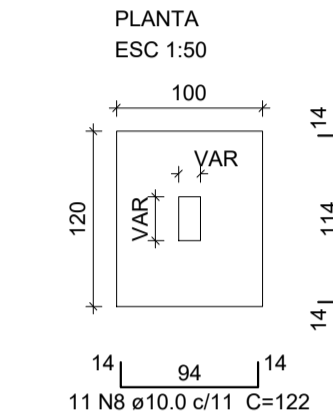
S1	3xS8	2xS11
S13	3xS14	S18
S22	5xS26	S37
2xS43		

Resumo do aço

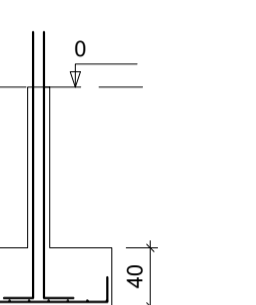
ÁÇO	DIAM (mm)	C.TOTAL (m)	PESO + 10 % (kg)
CA50	10.0	1826.2	1265.54
CA60	5.0	500.5	84.9
PESO TOTAL (kg)			
CA50		1265.54	
CA60		84.9	

Volume de concreto (C-25) = 27.28 m<sup>3</sup>  
Área de forma = 131.00 m<sup>2</sup>

S1=S2=S3=S4=S5=S6=S7=S9=S10=S11=S16=  
S17=S18=S24=S25=S27=S31=S32=S33=S34=  
S35=S36=S37=S38=S40=S41=S43=S44

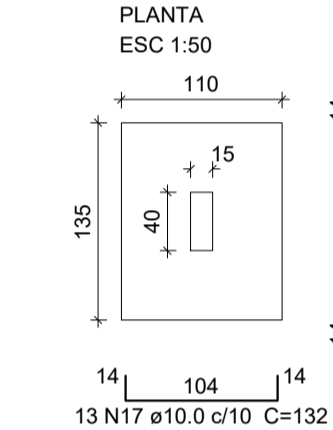


CORTE  
ESC 1:50

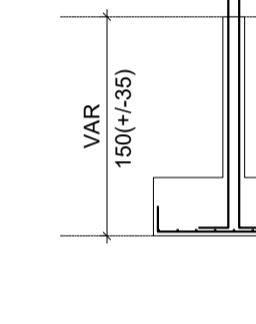


Solo com capacidade de suporte > 1.60 kgf/cm<sup>2</sup>  
Solo compactado sobre a sapata  
peso específico > 2000.00 kgf/m<sup>3</sup>

S12=S13=S15=S19=S20

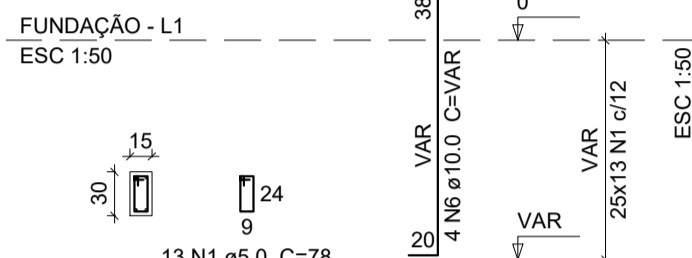


CORTE  
ESC 1:50

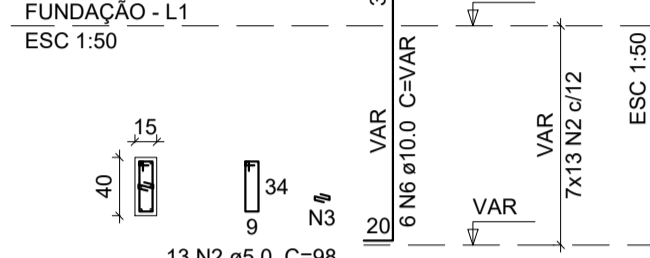


Solo com capacidade de suporte > 1.60 kgf/cm<sup>2</sup>  
Solo compactado sobre a sapata  
peso específico > 2000.00 kgf/m<sup>3</sup>

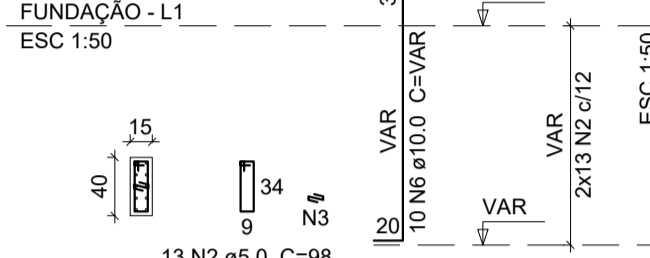
P1=P2=P3=P4=P5=P6=P7=P9=P10=P11=P17=P18=  
=P24=P26=P27=P28=P29=P30=P31=P32=P35=  
=P36=P38=P40=P41



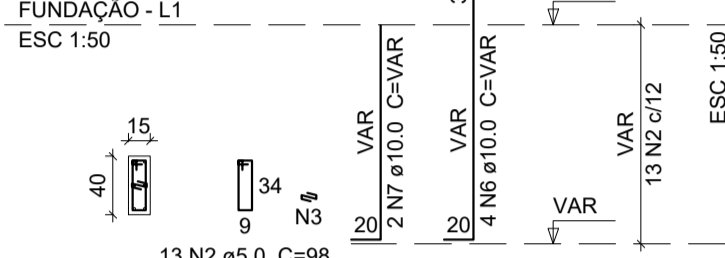
P12=P13=P14=P19=P21=P22=P23



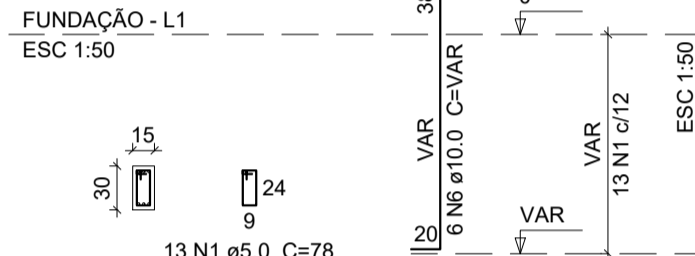
P15=P16



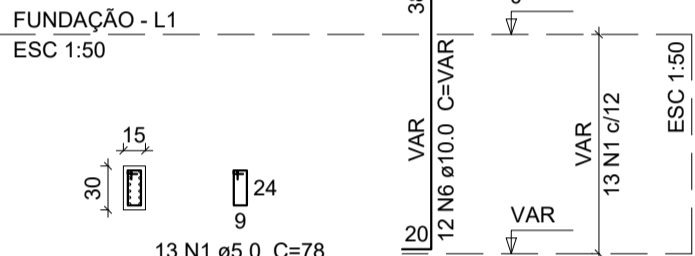
P20



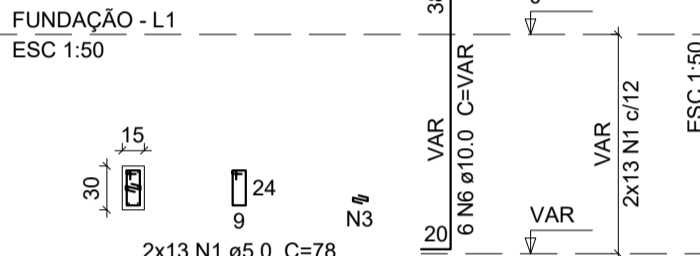
P25



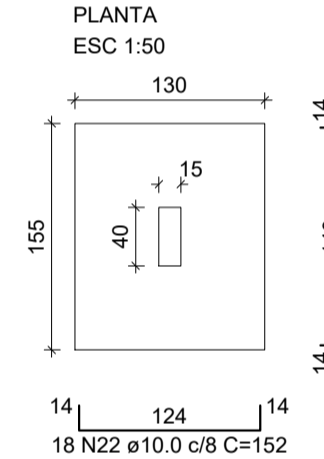
P33



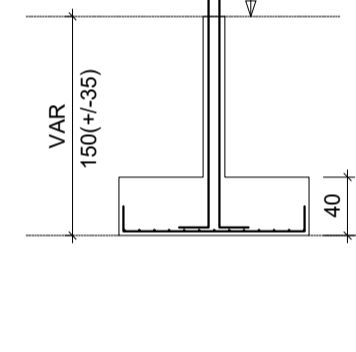
P34=P37



S21=S22=S26=S28=S29=S30

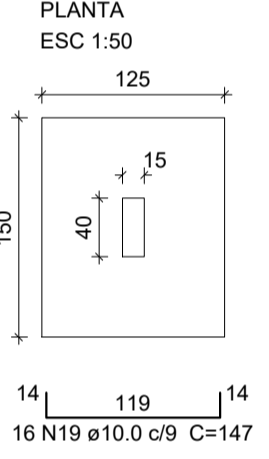


CORTE  
ESC 1:50

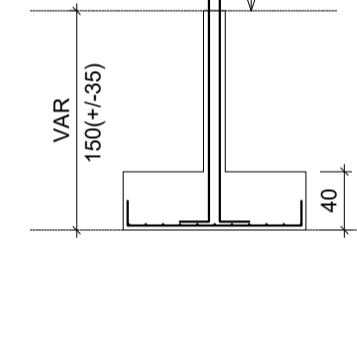


Solo com capacidade de suporte > 1.60 kgf/cm<sup>2</sup>  
Solo compactado sobre a sapata  
peso específico > 2000.00 kgf/m<sup>3</sup>

S14=S21=S23

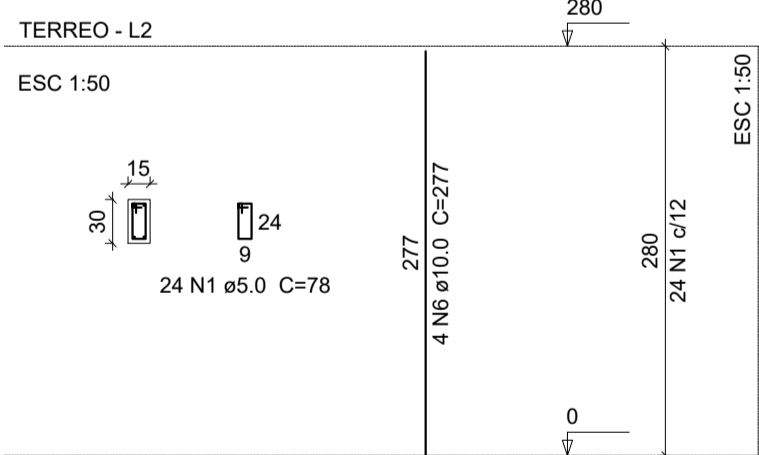


CORTE  
ESC 1:50

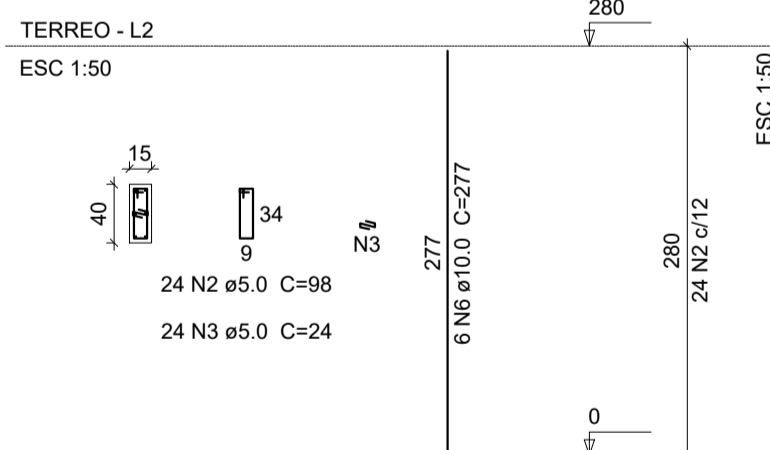


Solo com capacidade de suporte > 1.60 kgf/cm<sup>2</sup>  
Solo compactado sobre a sapata  
peso específico > 2000.00 kgf/m<sup>3</sup>

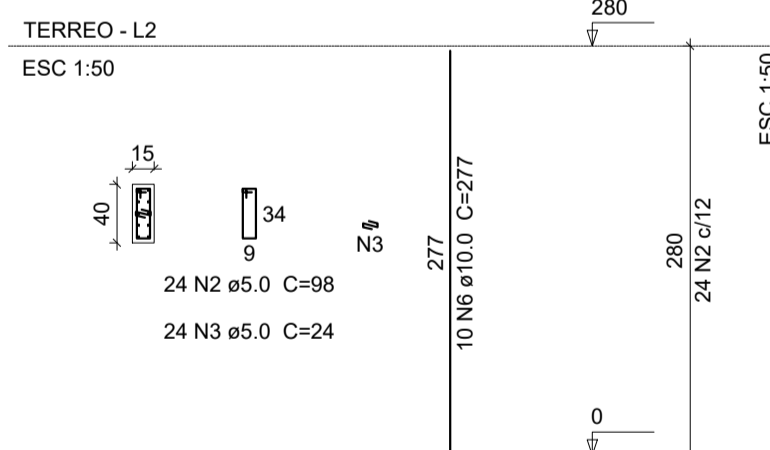
P1=P2=P3=P4=P5=P6=P7=P9=P10=P11=P17=P18=  
=P20=P24=P26=P27=P28=P29=P30=P31=P32=  
=P35=P36=P38=P40=P41



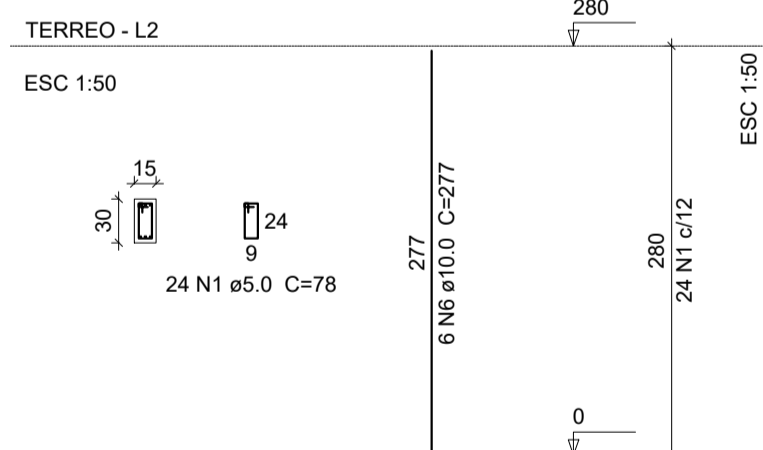
P12=P13=P14=P19=P21=P22=P23



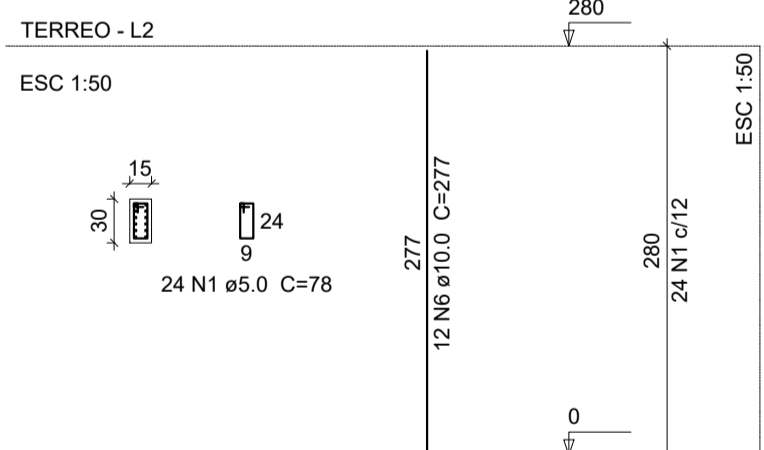
P15=P16



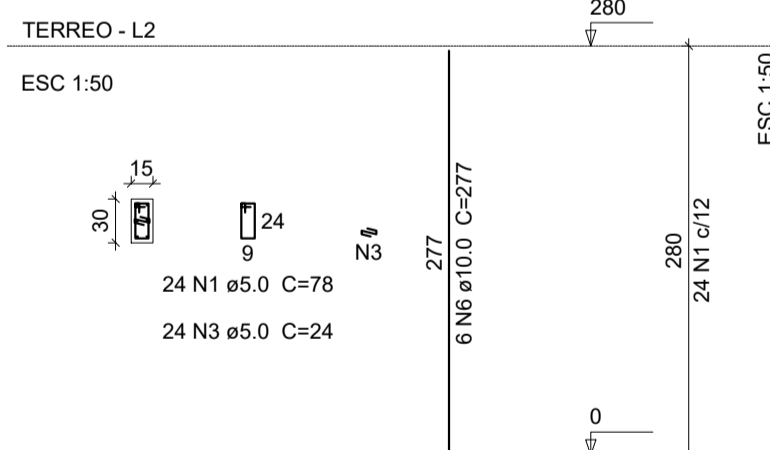
P25



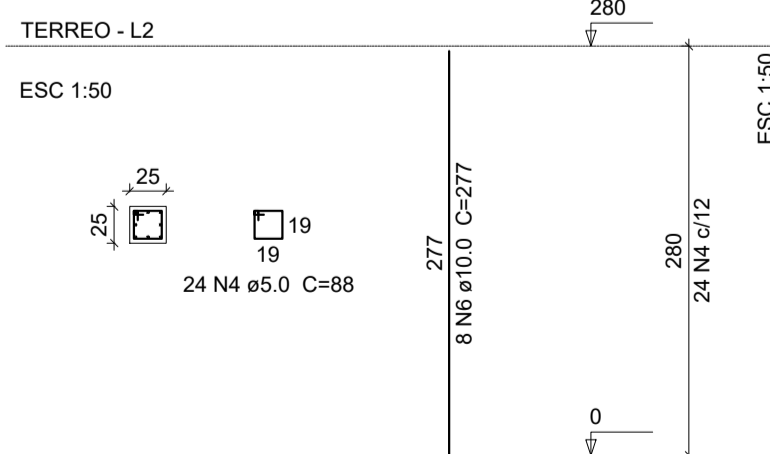
P33



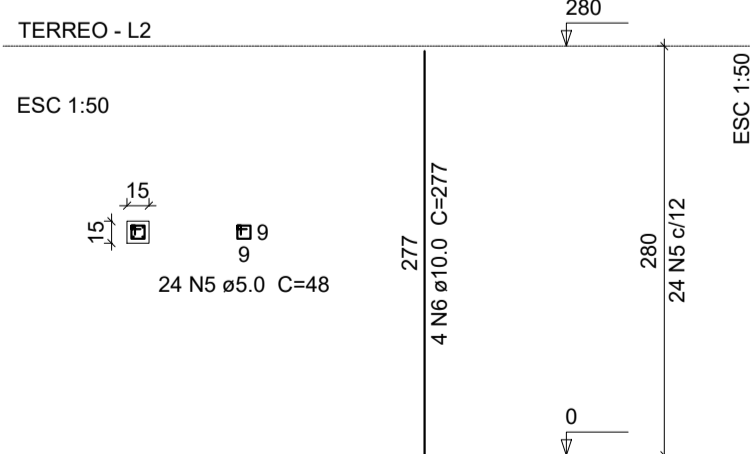
P34=P37



P43=P44



P8=P39=P42



Relação do aço Pilares

26xP1	3xP8	7xP12
2xP15	P25	P33
2xP34	2xP43	

AÇO	N	DIAM	Q	UNIT (cm)	C.TOTAL (cm)
CA60	1	5.0	720	78	56160
	2	5.0	216	98	21168
	3	5.0	264	24	6336
	4	5.0	48	88	4224
	5	5.0	72	48	3456
CA50	6	10.0	224	277	62048

Resumo do aço Pilares

ÁÇO	DIAM	C.TOTAL (m)	PESO + 10 % (kg)
CA50	10.0	620.5	420.8
CA60	5.0	913.5	154.9
PESO TOTAL			
CA50		420.8	
CA60		154.9	

Vol. de concreto total (C-25) = 5.83 m<sup>3</sup>  
Área de forma total = 113.96 m<sup>2</sup>

## PREFEITURA DE SÃO JOSÉ DO VALE DO RIO PRETO - RJ

ECONSTRUT CONSTRUÇÕES EIRELI.  
Estrada Silveira da Motta, Parada Morelli  
S. J. Vale do Rio Preto - RJ  
CEP: 25780-000

Obra: UNIDADE BÁSICA DE SAÚDE - BARRINHA		
Projeto: PROJETO ESTRUTURAL		
Disciplina: DETALHES SAPATAS E PILARES	Escala: INDICADA	Data: JAN/2023
Escritório Responsável: ABBM BRAGA - COMÉRCIO E SERVIÇOS LTDA	Prancha: <b>02/08</b>	
Responsável Técnico: BRUNO TELES NEVES - CREA 2015105127		
Fiscalização e Supervisão:	Revisão: 01	